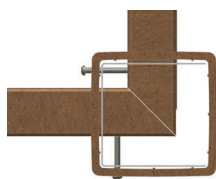
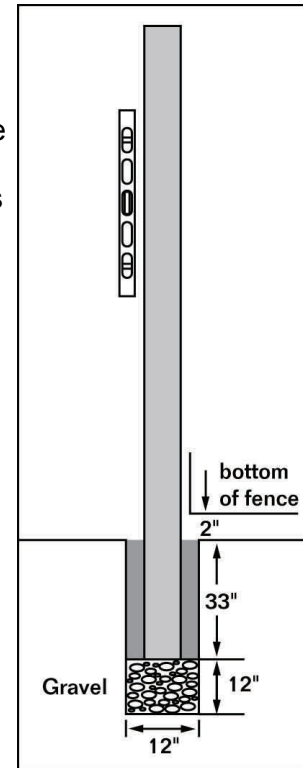


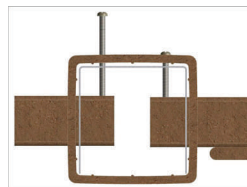
## Enclave™ Fence Installation Guide

- Dig the first couple post holes 12" in diameter. Do not dig all post holes at once as measurement can vary with ground slope. Install posts 96" center to center.
- Dig holes 45" deep to allow for 12" of gravel at the bottom of each hole with 33" of the post below the ground.
- Set first post, level, plumb and pour in quick set cement. Typically this is an end or corner post.
- Install post 75" above grade measured from top of grade to top of post.
- Install pickets 2" above ground and extend to 1" below top of post.
- Set next post. Orientation of the post is very important to ensure proper post alignment and fastening of the post, cross rail and steel post insert.
- Review the drawings below for correct screwing patterns.

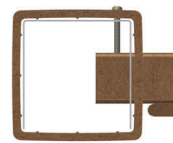
***NOTE: Do not pour concrete for the second and subsequent posts until all pickets are installed on the preceding section and final adjustments are made.***



Corner Post



Line Post



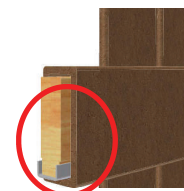
End Post

- Mark the end of each backer rail at 1 3/4" from each end.
- Insert cross rails to your mark and screw to the first and second post using provided color matched screws. Pre-drilling is not necessary. Make sure the steel is on the bottom of the backer rail.
- Install pickets using:
  - 1 1/2" galvanized or stainless staples
  - 1 3/4" galvanized or stainless finish nails
  - Color matched screws

Note: If using staples, orient staples parallel to the grain to help hide it.
- The system is designed for a 1/8" gap between pickets.
  - The 3 1/2" pickets require 25 pickets per section.
  - The 7" pickets require 13 pickets per section.
  - For "shadow box" design add 1 picket and adjust spacing as needed.
- Make sure pickets are 2" off grade and 1" below top of posts. If necessary, readjust cross rails at second post to ensure full picket widths.
- Level and plumb second post. Pour quick set cement.
- Repeat process for balance of job.
- To allow for variations in installation, do not dig more than a few post holes ahead at any one time.



Backer Rail



Backer Rail

